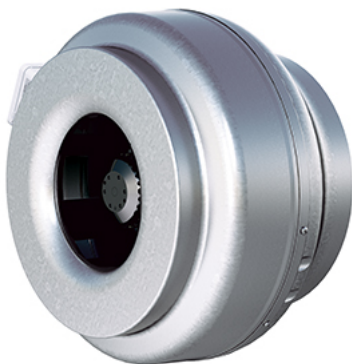


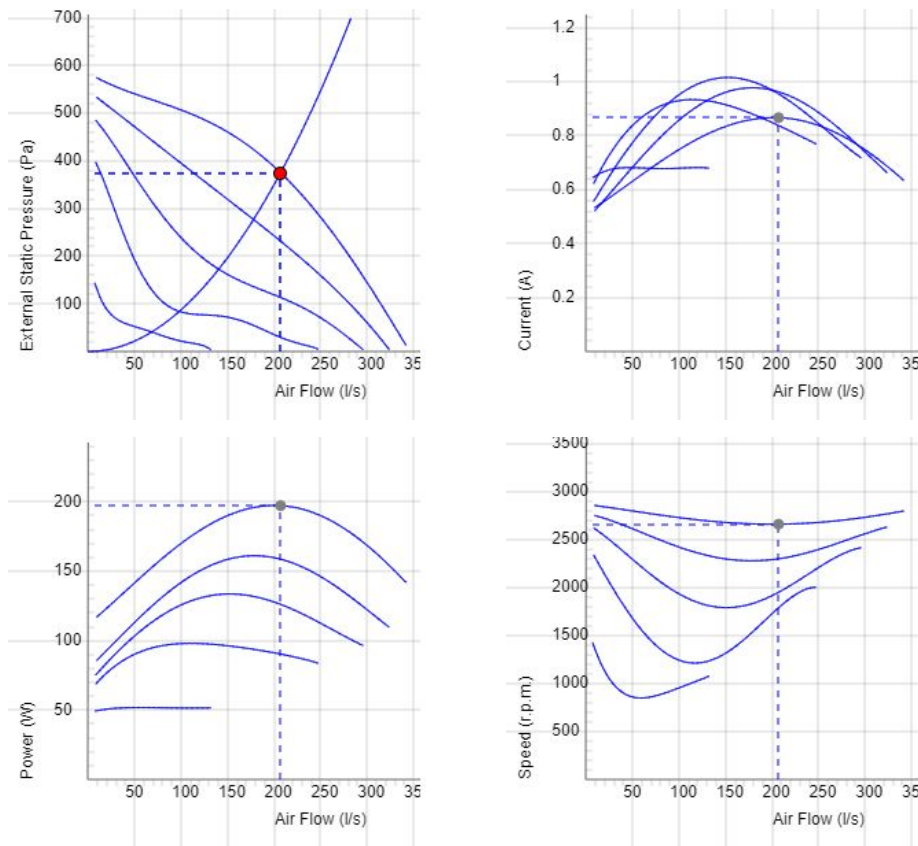
CK 315 B1



- Duct fan with circular connections.
- Proven performance and reliability.
- Compact with high capacity and efficiency.
- Low sound levels.
- Operational in both 50 and 60 Hz.
- Impeller with backward curved blades.
- The external rotor motor has maintenance-free sealed ball-bearings and is very energy efficient.
- For speed control a transformer or electronic speed controller can be connected.
- Integrated motor protection.
- Junction box has enclosure class IP 54.
- Fan housing is manufactured from galvanized sheet steel.
- The fan is intended to be installed in a duct system.
- A duct connected fan can be installed outside or in damp environments.
- Easy installation in any position.



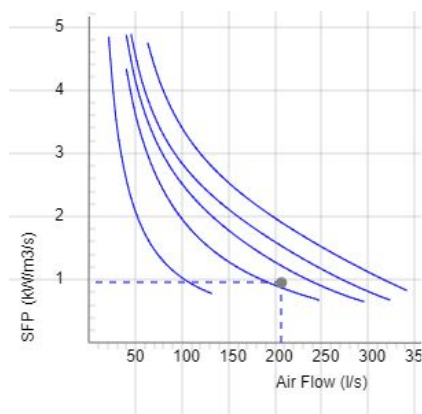
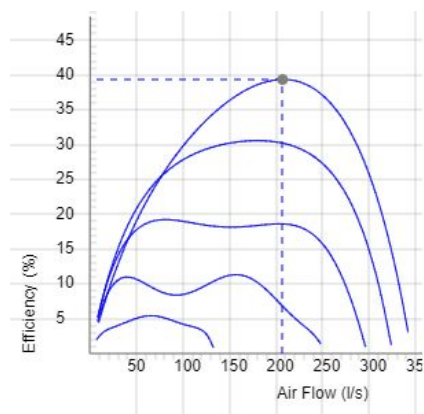
DIAGRAMS



Data

Air Flow (l/s) 207	External static pressure (Pa) 375	Power (W) 197	Speed (r.p.m.) 2662	Current (A) 0.867	Voltage (V) 230
-----------------------	--------------------------------------	------------------	------------------------	----------------------	--------------------

DIAGRAMS

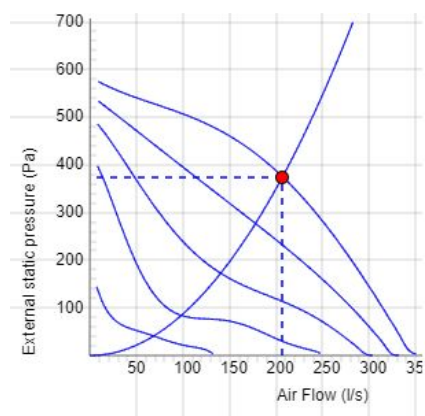


DATA

Efficiency (%)
39.4

SFP (kW/m³/s)
0.953

SOUND DATA



	Tot	63	125	250	500	1k	2k	4k	8k
Inlet Lw dB(A)	75	56	58	64	65	66	69	69	63
Outlet Lw dB(A)	77	57	58	71	66	70	71	69	64
Surrounding Lw dB(A)	54	34	38	45	46	48	48	45	37
Surrounding Lp dB (A) 20m ² Sabine, hemispherical 3m	47								

Data - SOUND

Air Flow (l/s) 207	External static pressure (Pa) 375	Power (W) 197	Speed (r.p.m.) 2662	Current (A) 0.867	Efficiency (%) 39.4	SFP (kW/m ³ /s) 0.953	Voltage (V) 230
-----------------------	--------------------------------------	------------------	------------------------	----------------------	------------------------	-------------------------------------	--------------------

TECHNICAL DATA

CK 315 B1 aut tp 7000314

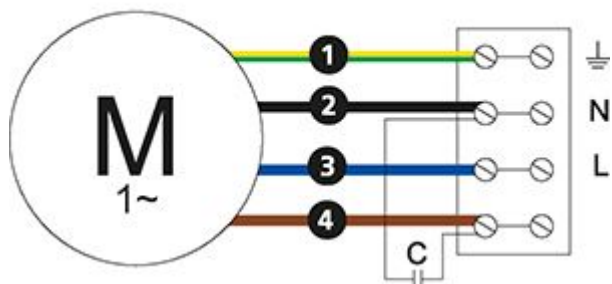
Parameter	Value	Unit
Voltage	230	V
Phase	1	~
Frequency	50	Hz
Optional frequency	60	Hz
Power	197	W
Current	0.87	A
Current when speed controlled	0.97	A
Speed	2660	r.p.m.
Max. temperature of transported air	80	°C
Max. temperature of transported air when speed controlled	70	°C
Sound pressure level at 3 m	47	dB(A)
Weight	6.1	kg
Enclosure class	44	IP
Insulation class, motor	F	
Capacitor	6	µF
Duct connection	315	mm
Max. flow	406	l/s
Max. pressure	632	Pa
Voltage range	220-240	V

PRODUCT INFORMATION SHEET

Parameter	Value	Unit
(a) Manufacturer	Östberg	-
(b) Model code	CK 315 B1	-
(c) Declared type	NRVU / UVU	-
(d) Type of drive	Multi-speed drive	-
(e) Type of HRS	N/A	-
(f) Thermal efficiency	N/A	%
(g) Nominal flow rate	0.214	m ³ /s
(h) Effective power input	0.197	kW
(i) SFP int	N/A	W/(m ³ /s)
(j) Face velocity	2.7	m/s
(k) Nominal external pressure	360	Pa
(l) Internal pressure drop	N/A	Pa
(n) Static efficiency	44.5	%
(o) External (and internal) leakage rate	0.18	%
(p) Filter classification	N/A	%
(q) Visual filter warning	N/A	-
(r) Sound power level	54	dB LwA
(s) Disassembly instructions	www.ostberg.com	-

WIRING DIAGRAM

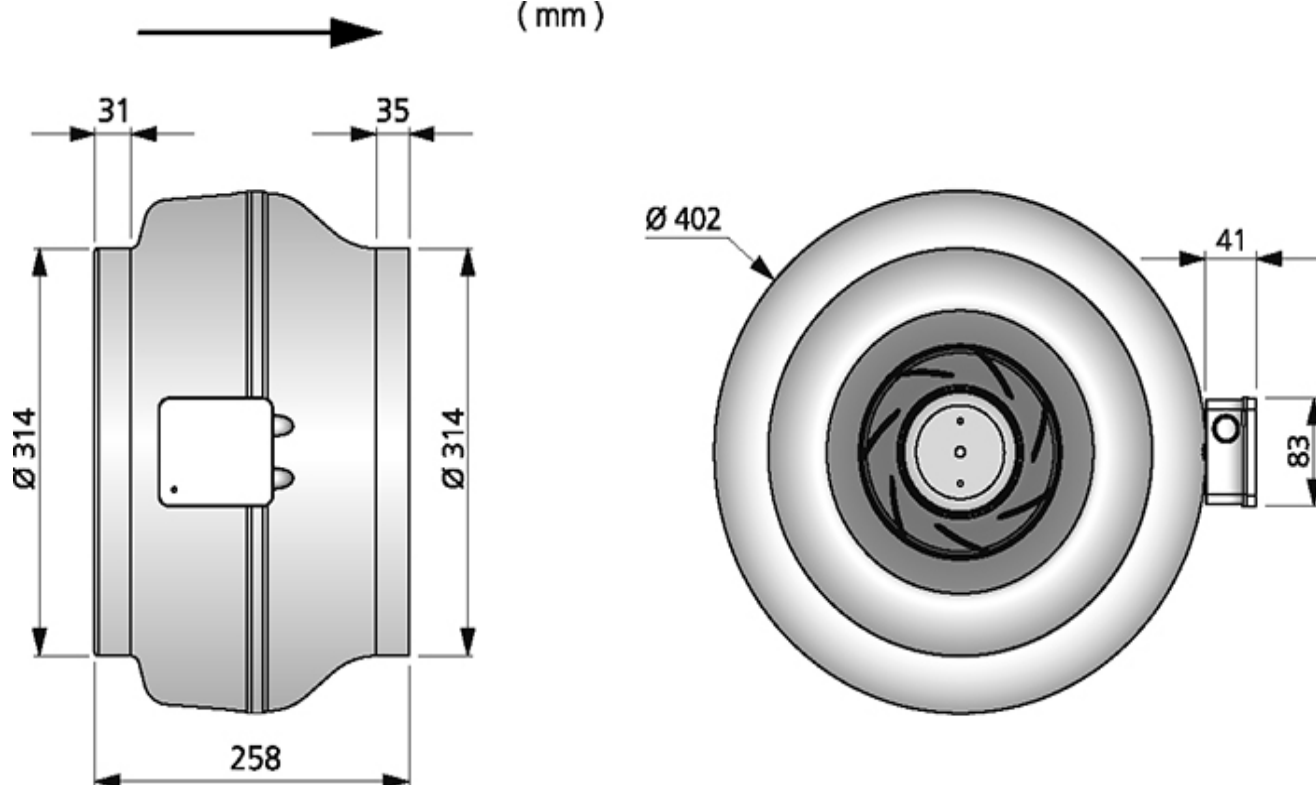
4040001



- Ⓜ = Fan Motor
- Ⓜ1 = Fan Motor
- Ⓜ2 = Fan Motor
- Ⓜ3 = Rotor Motor
- ① = Yellow/Green
- ② = Black
- ③ = Blue
- ④ = Brown
- ⑤ = White
- ⑥ = Orange
- ⑦ = Grey
- ⑧ = Red
- ⑨ = Green
- ⑩ = Violet
- ⑪ = Quick switch
- ⑫ = Yellow

DIMENSIONS

(mm)



ACCESSORIES

Mechanical accessories



Mounting bracket Kit MB



Mounting clamp MK



Safety grille BSV 315



Back draught shutter RSK 315



Louvre YG 315



Louvre shutter VK 315



Filterbox FLK 315



Filterbox FLF 315



Silencer LDC 315

Electrical accessories



Transformer controller VRTE 1



Transformer controller VRDE 1.5



Speed controller VRS 2.0